



VISUAL RESOURCE : WATERSHED DELINEATION

Figures 1 & 2

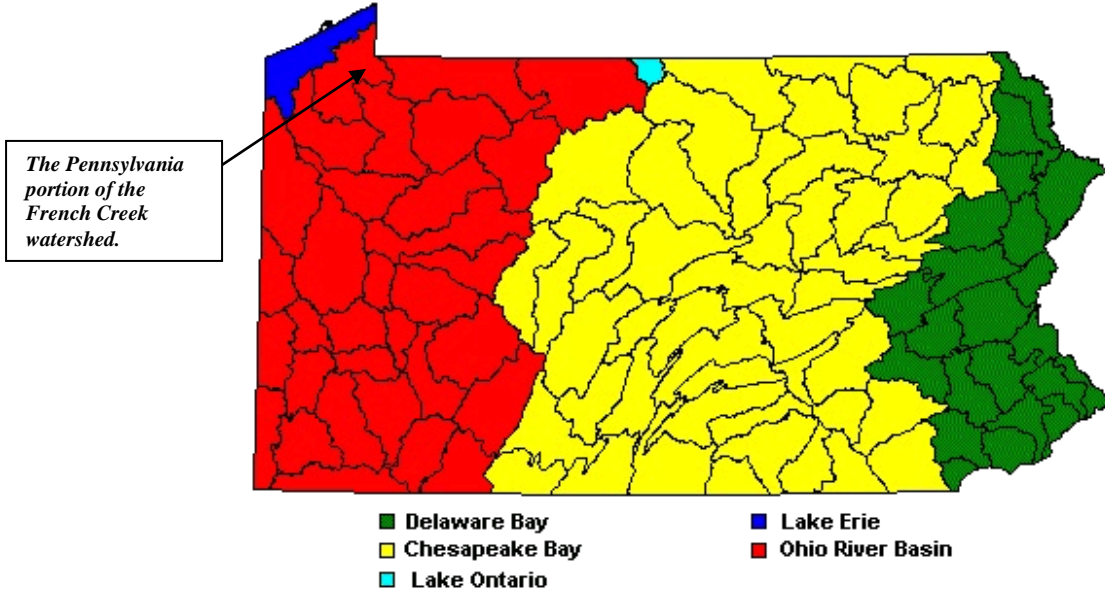


Figure 1. The large Ohio River Basin watershed in Pennsylvania includes the drainage from all of the smaller watersheds within it, including the French Creek watershed.

Source: <http://www.dep.state.pa.us/river/images/PAdrainage.gif>

Note: This version of the Watersheds of Pennsylvania map combines the Potomac River Watershed and Susquehanna River Watershed into the Chesapeake Bay Watershed.

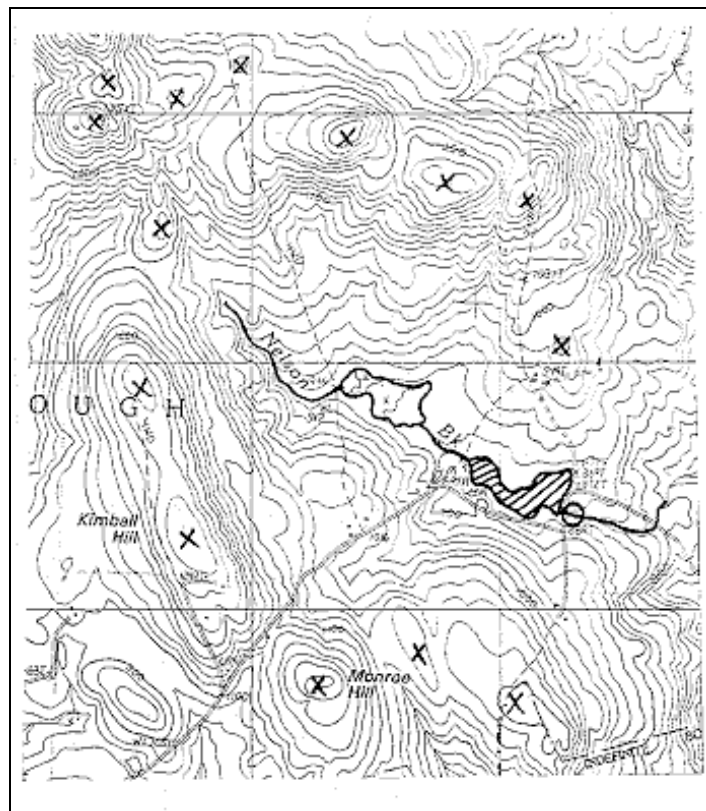


Figure 2. Concentric contour lines represent hilltops (Xs). High points of land around a waterway help form the watershed boundary.

Source: http://www.nh.nrcs.usda.gov/other/ws_delineation.htm





VISUAL RESOURCE : WATERSHED DELINEATION

Figures 3 & 4

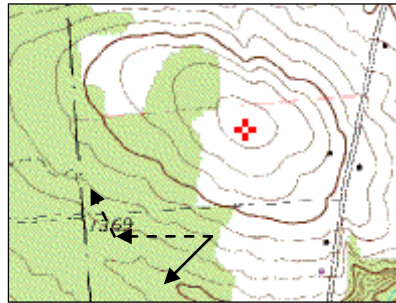


Figure 3. Surface/groundwater flow is always perpendicular to contour lines (→ arrow).
Source: <http://www.topozone.com>

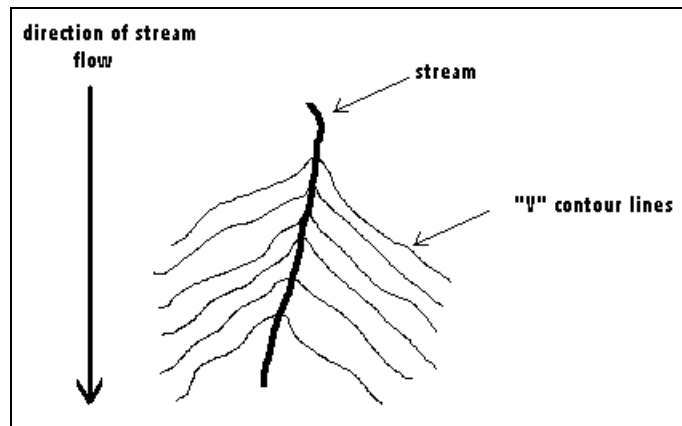


Figure 4. V-shaped contour lines point in the opposite direction of stream flow.





VISUAL RESOURCE: WATERSHED DELINEATION

Figures 5 & 6

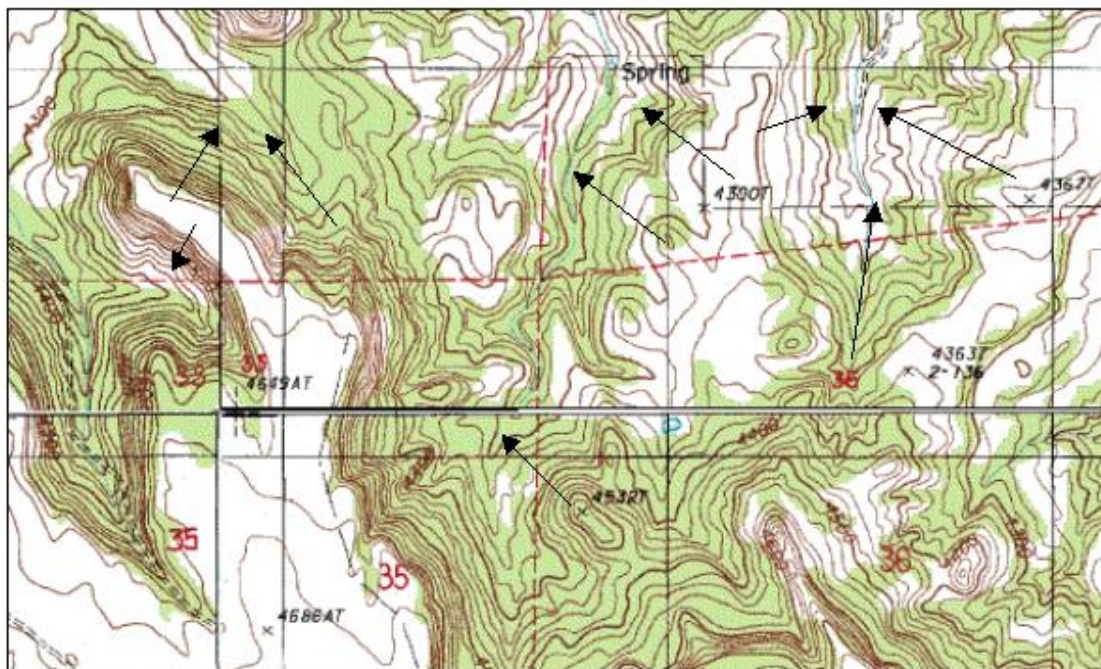
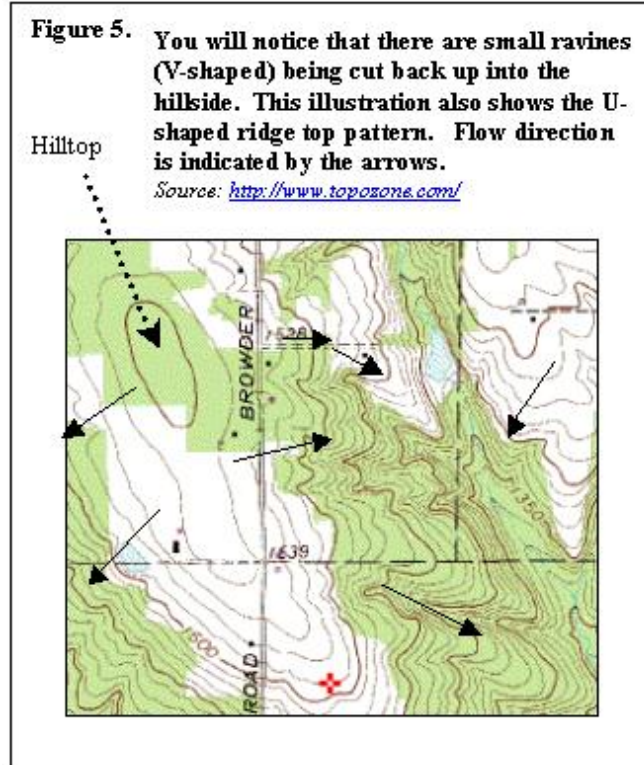


Figure 6. Runoff and groundwater flows perpendicular to contour lines, whether flowing down a hill or through a ravine. Arrows show the direction of flow.

Source: <http://www.topozone.com/>





VISUAL RESOURCE : WATERSHED DELINEATION

Figure 7

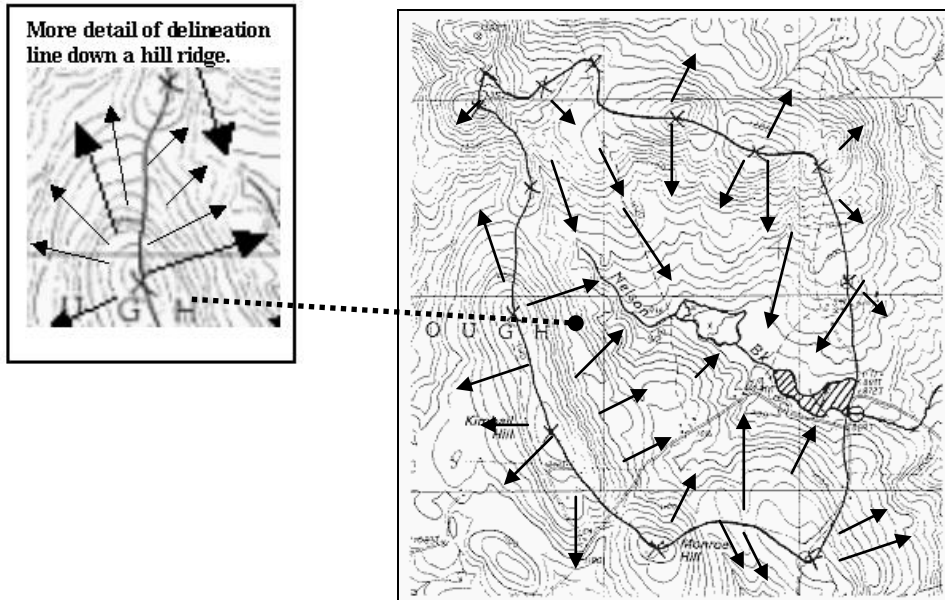


Figure 7. Delineated watershed with arrows pointing in the direction of runoff flow and X'ed hilltops and high points.
Adapted from: http://www.nh.nrcs.usda.gov/other/ws_delineation.htm

