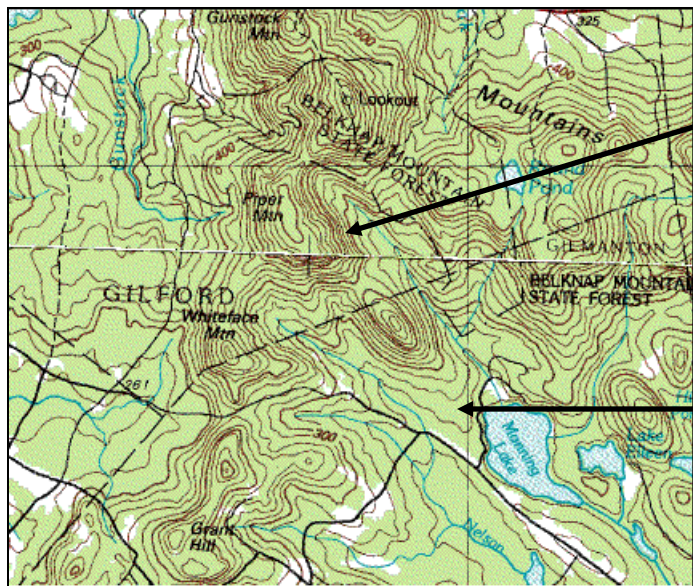


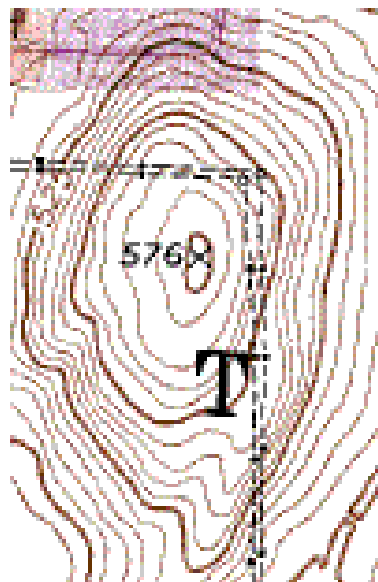


# Handout : Reading Contour Lines

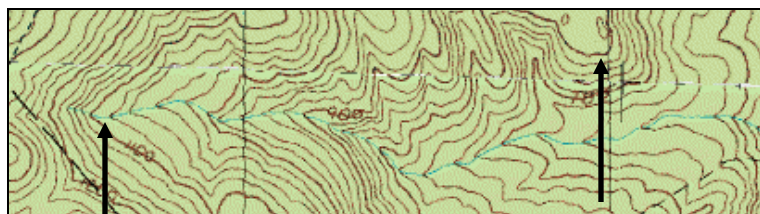


Closely-spaced contour lines depict steep slopes.

More widely-spaced contour lines indicate gradual slopes.



Concentric circular or oval contour lines represent hills.



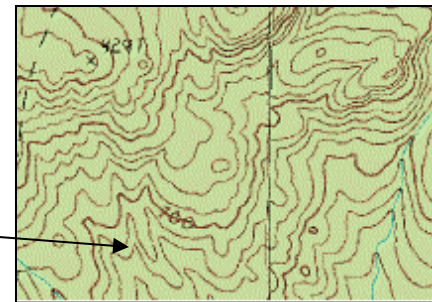
V-shaped contour lines indicate valleys, ravines, or gullies.

U-shaped contour lines denote ridges.



Concentric circular or oval contour lines with hachure-marks represent depressions.

Irregular, zigzag contour lines indicate uneven terrain.



Figures adapted from:

<http://geography.about.com/gi/dynamic/offsite.htm?site=http%3A%2F%2Fwww.topozone.com%2Ffind.asp>