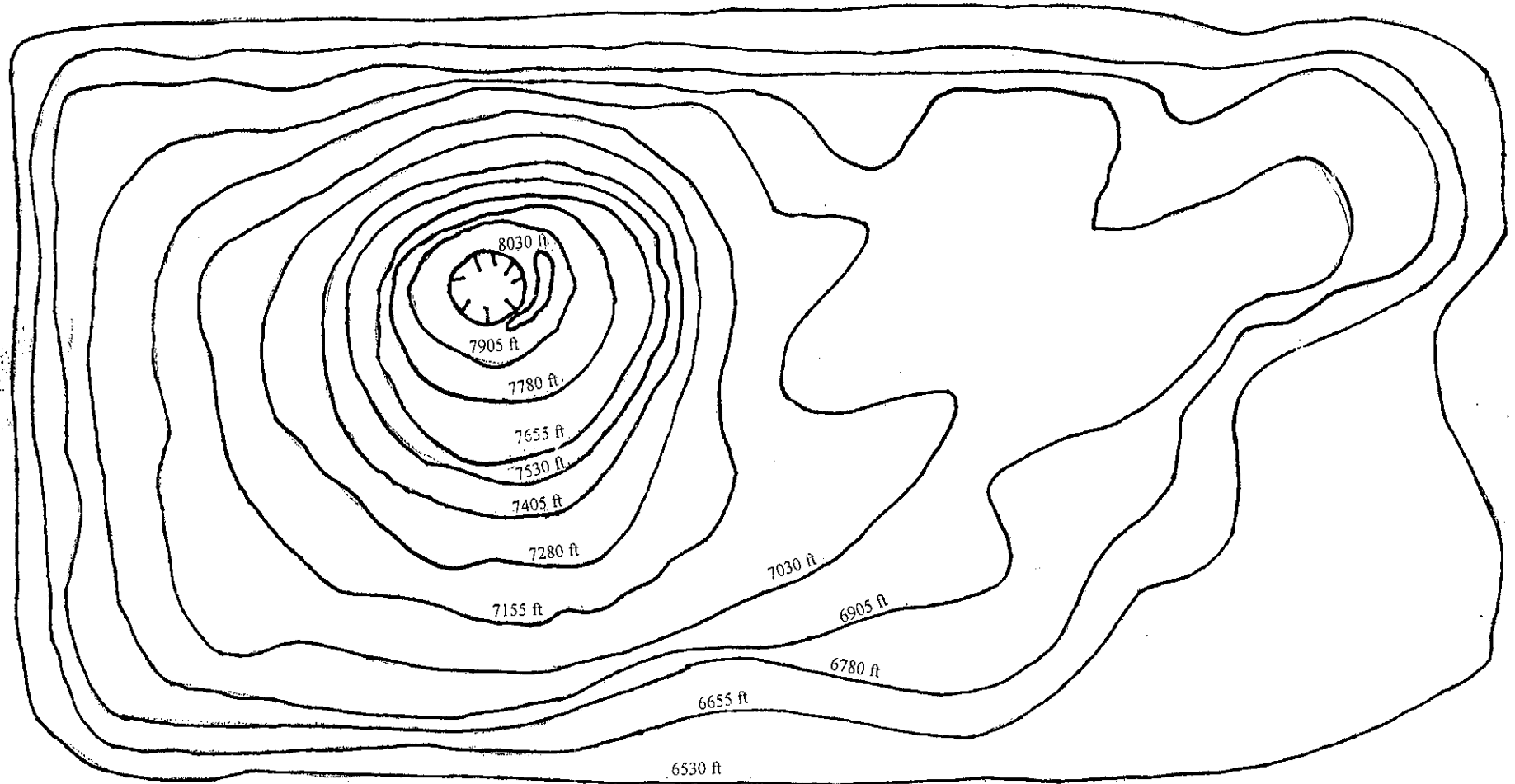




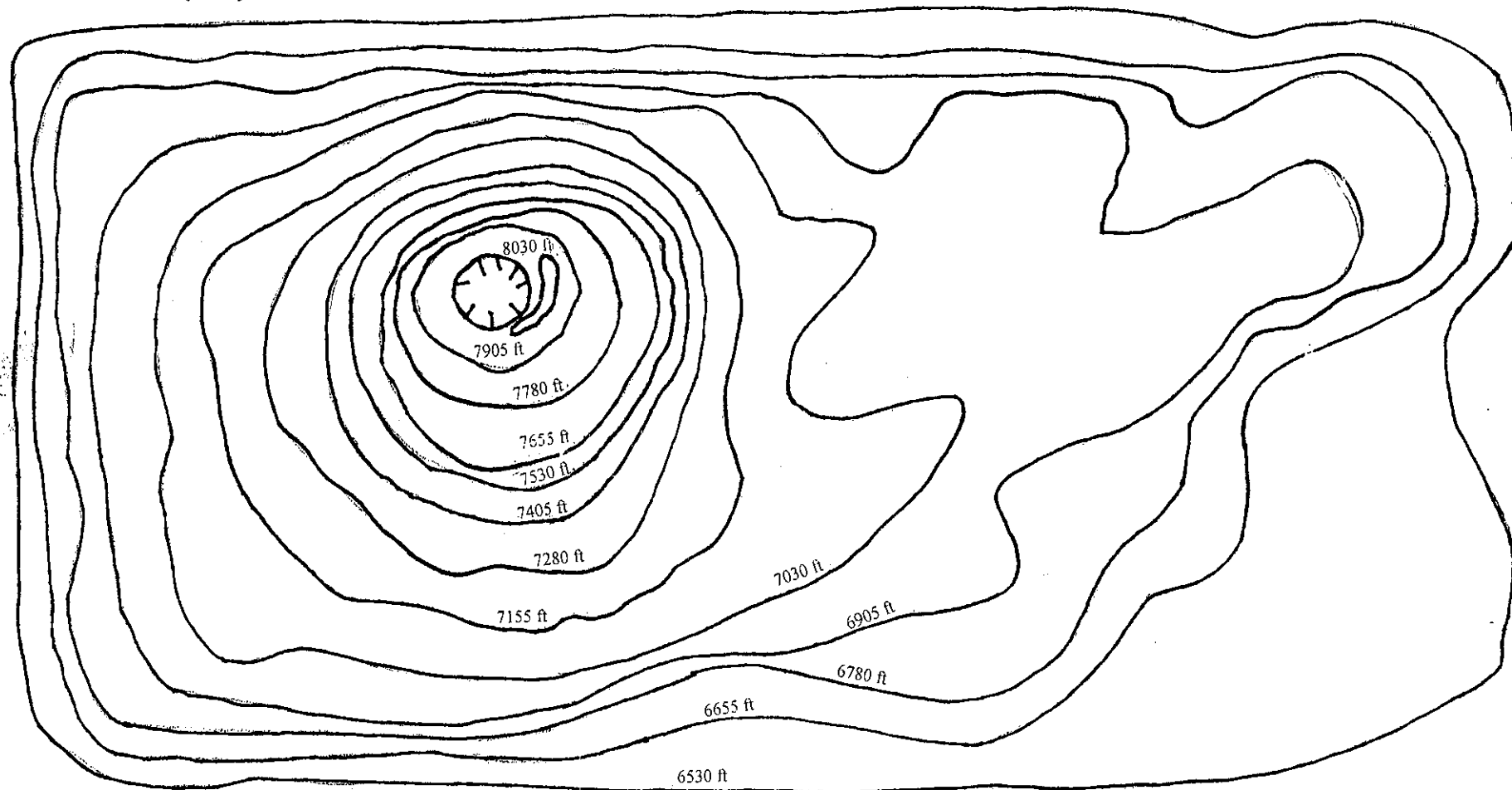
KEY: WATERSHED TOPOGRAPHY—THE CONTOUR MODEL



“Topographic map” based on a 0.5-centimeter (equals 125 feet) contour interval.



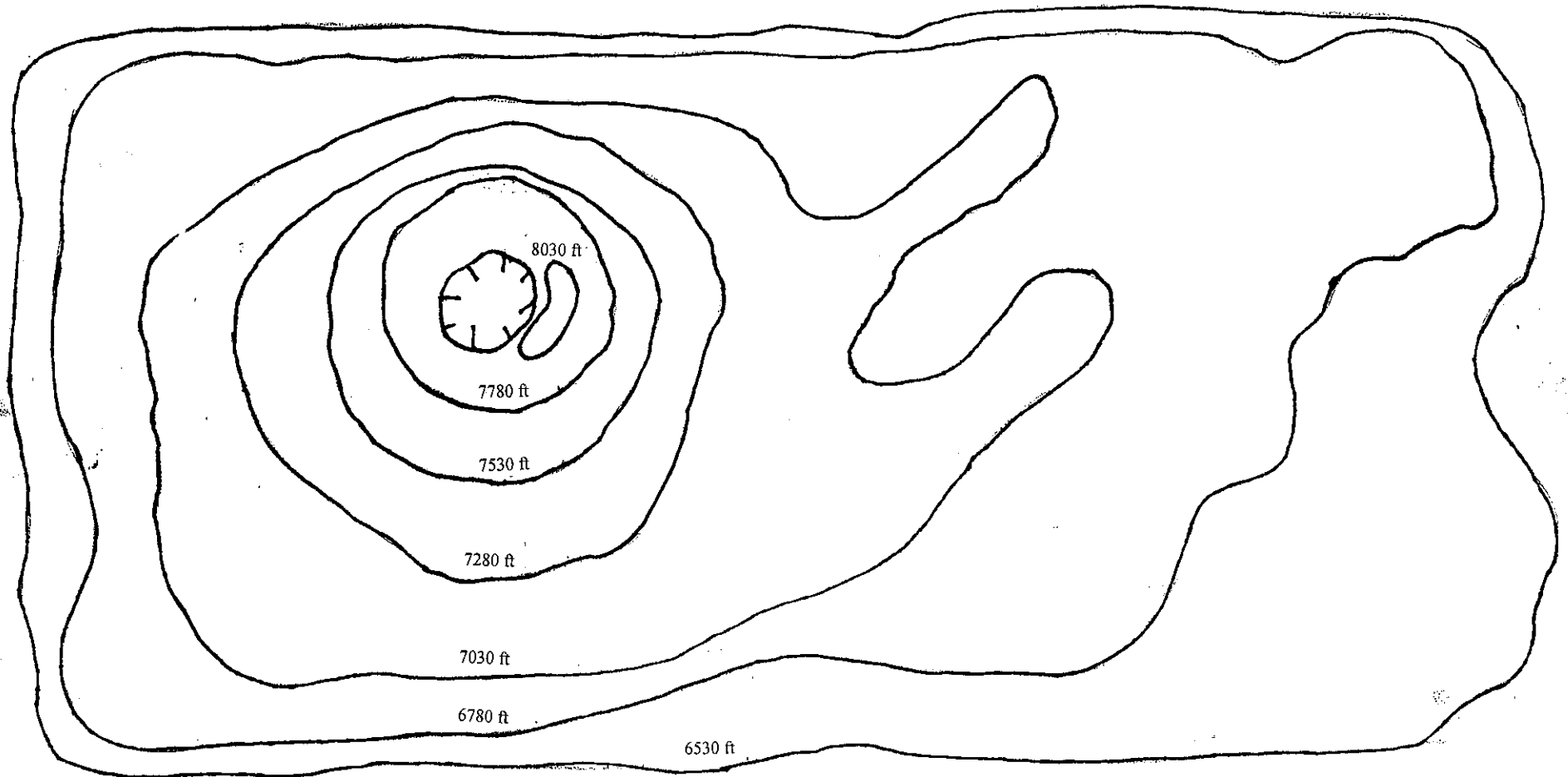
KEY: WATERSHED TOPOGRAPHY—THE CONTOUR MODEL



“Topographic map” based on a 0.5-centimeter (equals 125 feet) contour interval.



KEY: WATERSHED TOPOGRAPHY—THE CONTOUR MODEL.



“Topographic map” based on a one-centimeter (equals 250 feet) contour interval.