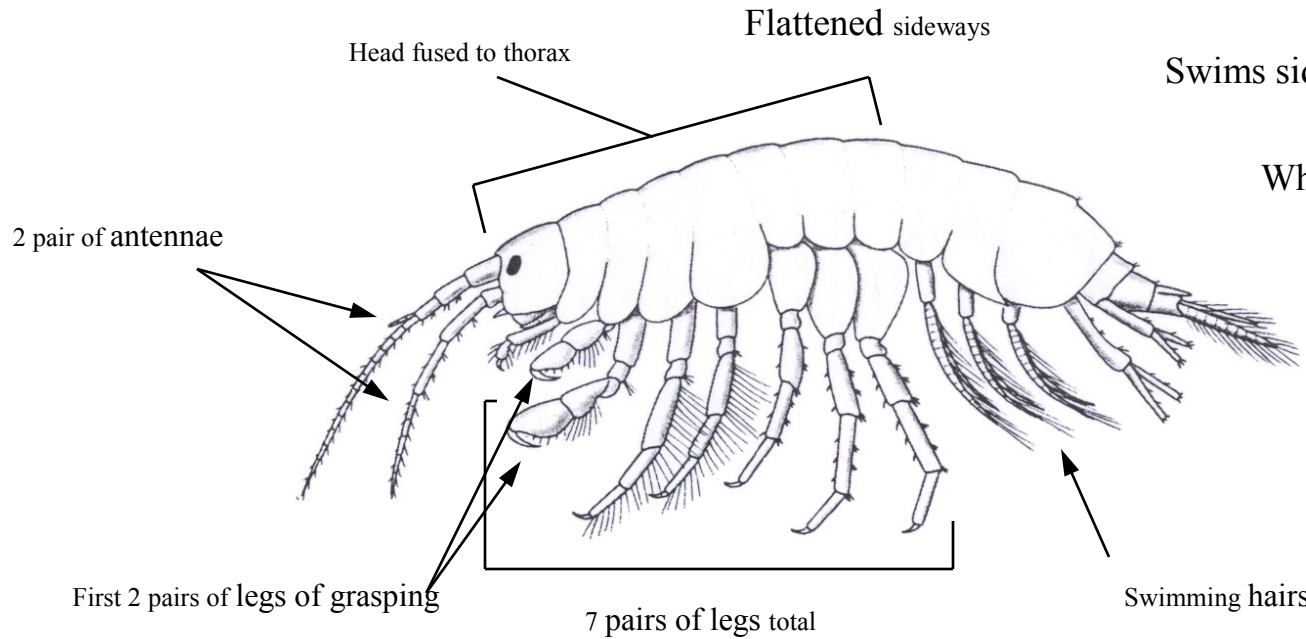


Scud (Sideswimmer)

Size: 5-20mm

Order: Amphipoda Family: Gammaridae

Number of species in North America: 150



Swims sideways and rests in a curved position

White or clear body with many segments

2 scuds often cling together

Credits: McCafferty, W. Patrick. Aquatic Entomology, 1981.

SIMILAR TO: Aquatic Sowbug

- Body flattened side to side (scud) vs. body flattened top to bottom (aquatic sowbug).

Diet: Detritus (dead animal and plant pieces or other organic matter). Some may filter feed.

Food for: Fish, predaceous water insects.

Habitat: Open water and rests on bottom and on debris in shallow water environments.

Movement: Swims on side. Also crawls and walks. Often will swim in circles. More active at night.

Breathing: Movement of swimming hairs pushes oxygen into the gills under its body.

Water Quality Indicator: Group II – Can tolerate some water pollution.

Life Cycle Corner

Incomplete metamorphosis

Eggs kept with female in portions of a shedded skeleton.

Eggs hatch in 9 - 30 days revealing miniature adults that stay with female for a few days until she molts releasing the young.

