

Dear Fraternity/Sorority Presidents and Scholarship Chairs:

Congratulations on completing another successful semester at Allegheny College. Here are a few scholarship highlights for the Fall 2012 semester:

- The all-Greek GPA (3.17) remains higher than the all-College GPA (3.08).
- 184 members achieved a 3.5 or higher GPA for the fall semester. This represents 37% of the Greek community.
- 21 members achieved a 4.00 GPA for the fall semester.
- Kappa Alpha Theta had the highest GPA among all chapters (3.39).
- Phi Gamma Delta had the highest fraternity GPA (3.30).
- 9 chapters acquired a 3.0 or higher GPA. These chapters include Kappa Alpha Theta, Delta Delta Delta, Phi Gamma Delta, Alpha Chi Omega, Delta Tau Delta, Kappa Kappa Gamma, Phi Kappa Psi, Alpha Delta Pi, and Sigma Alpha Epsilon.

While the all-Greek GPA remains higher than the all-College GPA, chapters should assess their current scholarship programs and make necessary adjustments to achieve a high degree of academic performance. In particular, chapters should set a chapter GPA goal that is higher than the all-College GPA for the Spring 2013 semester.

In this report, we included data tables to compare chapter GPAs with the “unaffiliated” students GPA. This should indicate whether a positive or negative correlation exists among the GPAs of members vs. non-members. If your chapter’s GPA is higher than unaffiliated students, a positive correlation between membership in your organization and GPA exists. If your chapter’s GPA is lower than unaffiliated students, a negative correlation between membership in your organization and GPA exists. If you find that your chapter GPA is lower, we encourage you to make scholarship a priority during the spring semester. We ask that you utilize campus resources such as the Learning Commons or our office when working with members to meet individual and/or chapter scholarship goals.

Overall, we are pleased with the scholarship achievements of our fraternity/sorority community this semester. While 37 percent of this community achieved a 3.5 or higher GPA, there is a portion who struggled with their academic responsibilities. We hope that chapters will identify these members and support them in a variety of healthy ways. As usual, we hope to see all of our chapters above a 3.0 GPA and believe this goal is attainable in the upcoming semester.

Enclosed you will find current and historical data that shows average GPAs for our chapters, the fraternity/sorority community and the college community. If you have any questions or comments regarding fraternity/sorority scholarship please do not hesitate to contact us.

Sincerely,

Gretchen Symons  
Director of Student Involvement

Kate K.W. Gullatta  
Assistant Director of Student Involvement

Cc: James Mullen Jr., President; Linda DeMeritt, Dean of the College; Joe DiChristina, Dean of Students; Rick Holmgren, Executive Director of Learning, Information, and Technology Services; John Mangine, Associate Director of the Learning Commons; Rebecca Dickinson, Associate Director of the Learning Commons; Ed Giles, Assistant Director of the Learning Commons; inter/national fraternity and sorority offices; chapter advisors; house corporation officers (when applicable); Reighr Doughty, President, Interfraternity Council; Katie Shanahan, President, Panhellenic Council; chapter presidents

Enc: GPA reports for individual chapter members (scholarship chairs, chapter presidents & advisors ONLY)

### Current Semester and Previous Semester GPAs of Various Groups

*Chapter GPAs ranked from highest to lowest.*

|                        | Fall 2012   | Spring 2012 | Percent Change (%) | Number of Records |
|------------------------|-------------|-------------|--------------------|-------------------|
| Kappa Alpha Theta      | 3.39        | 3.22        | 5.28               | 55                |
| Delta Delta Delta      | 3.32        | 3.21        | 3.43               | 55                |
| Phi Gamma Delta        | 3.30        | NA          | NA                 | 19                |
| Alpha Chi Omega        | 3.28        | 3.14        | 4.46               | 57                |
| GREEK WOMEN            | 3.28        | 3.18        | 3.14               | 268               |
| Delta Tau Delta        | 3.28        | 3.28        | 0.00               | 59                |
| Kappa Kappa Gamma      | 3.27        | 3.19        | 2.51               | 57                |
| Female New Members     | 3.25        | 3.13        | 3.83               | 17                |
| ALL WOMEN              | 3.18        | 3.18        | 0.00               | 1108              |
| ALL GREEK GPA          | 3.17        | 3.11        | 1.93               | 503               |
| Unaffiliated Women     | 3.15        | 3.18        | -0.94              | 840               |
| Phi Kappa Psi          | 3.12        | 3.10        | 0.65               | 46                |
| All New Members        | 3.10        | 3.06        | 1.31               | 62                |
| Alpha Delta Pi         | 3.09        | 3.14        | -1.59              | 44                |
| <b>ALL COLLEGE GPA</b> | <b>3.08</b> | <b>3.09</b> | <b>-0.32</b>       | <b>2065</b>       |
| Sigma Alpha Epsilon    | 3.07        | 2.87        | 6.97               | 45                |
| Male New Members       | 3.05        | 2.95        | 3.39               | 45                |
| GREEK MEN              | 3.05        | 3.02        | 0.99               | 235               |
| Unaffiliated Students  | 3.05        | 3.07        | -0.65              | 1562              |
| ALL MEN                | 2.96        | 2.98        | -0.67              | 957               |
| Unaffiliated Men       | 2.93        | 2.97        | -1.35              | 722               |
| Phi Delta Theta        | 2.80        | 2.95        | -5.08              | 30                |
| Theta Chi              | 2.64        | 2.74        | -3.65              | 36                |

### Current Semester and Previous Semester Chapter GPAs

*GPAs ranked from highest to lowest.*

|                     | Fall 2012 | Spring 2012 | Percent Change (%) | Number of Records |
|---------------------|-----------|-------------|--------------------|-------------------|
| Kappa Alpha Theta   | 3.39      | 3.22        | 5.28               | 55                |
| Delta Delta Delta   | 3.32      | 3.21        | 3.43               | 55                |
| Phi Gamma Delta     | 3.30      | NA          | NA                 | 19                |
| Alpha Chi Omega     | 3.28      | 3.14        | 4.46               | 57                |
| Delta Tau Delta     | 3.28      | 3.28        | 0.00               | 59                |
| Kappa Kappa Gamma   | 3.27      | 3.19        | 2.51               | 57                |
| Phi Kappa Psi       | 3.12      | 3.10        | 0.65               | 46                |
| Alpha Delta Pi      | 3.09      | 3.14        | -1.59              | 44                |
| Sigma Alpha Epsilon | 3.07      | 2.87        | 6.97               | 45                |
| Phi Delta Theta     | 2.80      | 2.95        | -5.08              | 30                |
| Theta Chi           | 2.64      | 2.74        | -3.65              | 36                |

### Comparison of Chapters and All-College GPA

GPA's ranked from highest to lowest.

|                        | Fall 2012   | Spring 2012 | Percent Change (%) | Number of Records |
|------------------------|-------------|-------------|--------------------|-------------------|
| Kappa Alpha Theta      | 3.39        | 3.22        | 5.28               | 55                |
| Delta Delta Delta      | 3.32        | 3.21        | 3.43               | 55                |
| Phi Gamma Delta        | 3.30        | NA          | NA                 | 19                |
| Alpha Chi Omega        | 3.28        | 3.14        | 4.46               | 57                |
| Delta Tau Delta        | 3.28        | 3.28        | 0.00               | 59                |
| Kappa Kappa Gamma      | 3.27        | 3.19        | 2.51               | 57                |
| Phi Kappa Psi          | 3.12        | 3.10        | 0.65               | 46                |
| Alpha Delta Pi         | 3.09        | 3.14        | -1.59              | 44                |
| <b>ALL COLLEGE GPA</b> | <b>3.08</b> | <b>3.09</b> | <b>-0.32</b>       | <b>2065</b>       |
| Sigma Alpha Epsilon    | 3.07        | 2.87        | 6.97               | 45                |
| Phi Delta Theta        | 2.80        | 2.95        | -5.08              | 30                |
| Theta Chi              | 2.64        | 2.74        | -3.65              | 36                |

### Comparison of Chapters and All-Greek GPA

GPA's ranked from highest to lowest.

|                      | Fall 2012   | Spring 2012 | Percent Change (%) | Number of Records |
|----------------------|-------------|-------------|--------------------|-------------------|
| Kappa Alpha Theta    | 3.39        | 3.22        | 5.28               | 55                |
| Delta Delta Delta    | 3.32        | 3.21        | 3.43               | 55                |
| Phi Gamma Delta      | 3.30        | NA          | NA                 | 19                |
| Alpha Chi Omega      | 3.28        | 3.14        | 4.46               | 57                |
| Delta Tau Delta      | 3.28        | 3.28        | 0.00               | 59                |
| Kappa Kappa Gamma    | 3.27        | 3.19        | 2.51               | 57                |
| <b>ALL GREEK GPA</b> | <b>3.17</b> | <b>3.11</b> | <b>1.93</b>        | <b>503</b>        |
| Phi Kappa Psi        | 3.12        | 3.10        | 0.65               | 46                |
| Alpha Delta Pi       | 3.09        | 3.14        | -1.59              | 44                |
| Sigma Alpha Epsilon  | 3.07        | 2.87        | 6.97               | 45                |
| Phi Delta Theta      | 2.80        | 2.95        | -5.08              | 30                |
| Theta Chi            | 2.64        | 2.74        | -3.65              | 36                |

### Comparison of Women's Chapters and Unaffiliated Women

GPA's ranked from highest to lowest.

|                           | Fall 2012   | Spring 2012 | Percent Change (%) | Number of Records |
|---------------------------|-------------|-------------|--------------------|-------------------|
| Kappa Alpha Theta         | 3.39        | 3.22        | 5.28               | 55                |
| Delta Delta Delta         | 3.32        | 3.21        | 3.43               | 55                |
| Alpha Chi Omega           | 3.28        | 3.14        | 4.46               | 57                |
| Kappa Kappa Gamma         | 3.27        | 3.19        | 2.51               | 57                |
| <b>Unaffiliated Women</b> | <b>3.15</b> | <b>3.18</b> | <b>-0.94</b>       | <b>840</b>        |
| Alpha Delta Pi            | 3.09        | 3.14        | -1.59              | 44                |

### Comparison of Men's Chapters and Unaffiliated Men

GPA's ranked from highest to lowest.

|                     | Fall 2012 | Spring 2012 | Percent Change (%) | Number of Records |
|---------------------|-----------|-------------|--------------------|-------------------|
| Phi Gamma Delta     | 3.30      | NA          | NA                 | 19                |
| Delta Tau Delta     | 3.28      | 3.28        | 0.00               | 59                |
| Phi Kappa Psi       | 3.12      | 3.10        | 0.65               | 46                |
| Sigma Alpha Epsilon | 3.07      | 2.87        | 6.97               | 45                |
| Unaffiliated Men    | 2.93      | 2.97        | -1.35              | 722               |
| Phi Delta Theta     | 2.80      | 2.95        | -5.08              | 30                |
| Theta Chi           | 2.64      | 2.74        | -3.65              | 36                |

### Comparison of Greek Students and Unaffiliated Students

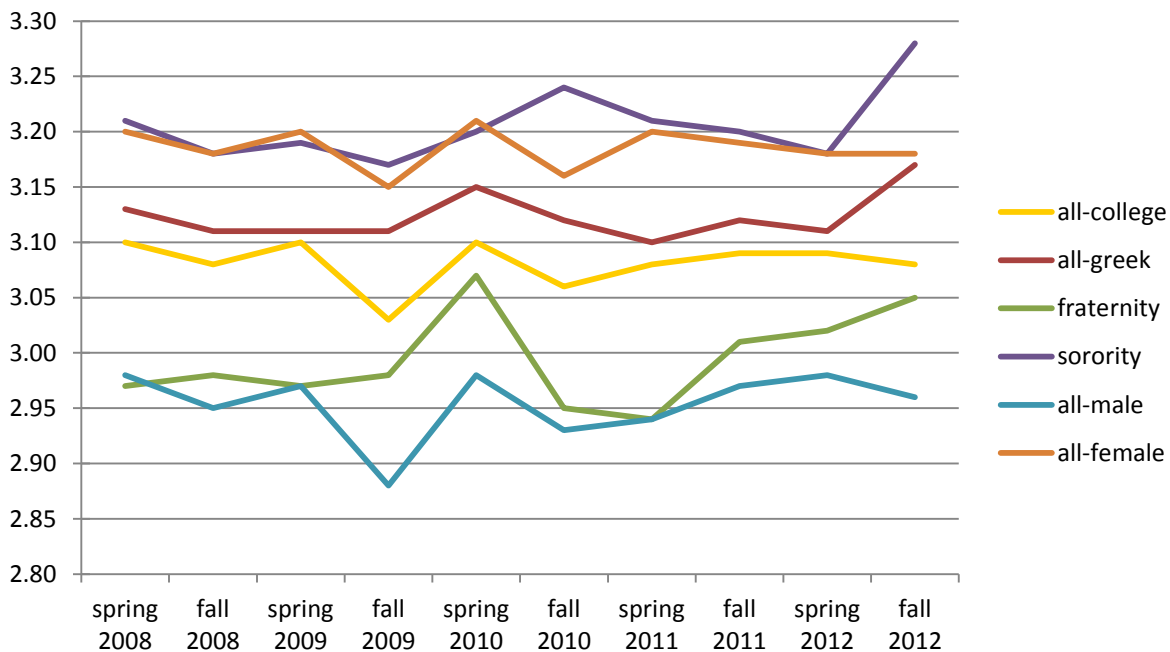
|                       | Fall 2012 | Spring 2012 | Percent Change (%) | Number of Records |
|-----------------------|-----------|-------------|--------------------|-------------------|
| GREEK WOMEN           | 3.28      | 3.18        | 3.14               | 268               |
| Unaffiliated Women    | 3.15      | 3.18        | -0.94              | 840               |
| GREEK MEN             | 3.05      | 3.02        | 0.99               | 235               |
| Unaffiliated Men      | 2.93      | 2.97        | -1.35              | 722               |
| ALL GREEK GPA         | 3.17      | 3.11        | 1.93               | 503               |
| Unaffiliated Students | 3.05      | 3.07        | -0.65              | 1562              |

### New Member GPAs

|                    | Fall 2012 | Spring 2012 | Percent Change (%) | Number of Records |
|--------------------|-----------|-------------|--------------------|-------------------|
| Female New Members | 3.25      | 3.13        | 3.83               | 17                |
| Male New Members   | 3.05      | 2.95        | 3.39               | 45                |

## Historical Data

### Fraternity/Sorority Scholarship: Spring 2008 to Fall 2012



### Chapter GPAs from the past 10 semesters

|                     | Chapter             | Spring 2008 | Fall 2008 | Spring 2009 | Fall 2009 | Spring 2010 | Fall 2010 | Spring 2011 | Fall 2011 | Spring 2012 | Fall 2012 |
|---------------------|---------------------|-------------|-----------|-------------|-----------|-------------|-----------|-------------|-----------|-------------|-----------|
| <b>Sororities</b>   | Alpha Chi Omega     | 3.16        | 3.17      | 3.16        | 3.20      | 3.23        | 3.31      | 3.19        | 3.23      | 3.14        | 3.28      |
|                     | Alpha Delta Pi      | 3.22        | 3.25      | 3.16        | 3.04      | 3.10        | 3.29      | 3.12        | 3.02      | 3.14        | 3.09      |
|                     | Delta Delta Delta   | 3.14        | 3.09      | 3.10        | 3.15      | 3.18        | 3.20      | 3.19        | 3.23      | 3.21        | 3.32      |
|                     | Kappa Alpha Theta   | 3.36        | 3.36      | 3.40        | 3.32      | 3.30        | 3.30      | 3.28        | 3.26      | 3.22        | 3.39      |
|                     | Kappa Kappa Gamma   | 3.18        | 3.03      | 3.15        | 3.14      | 3.19        | 3.12      | 3.29        | 3.22      | 3.19        | 3.27      |
| <b>Fraternities</b> | Delta Tau Delta     | 2.91        | 2.84      | 2.97        | 3.04      | 3.27        | 3.09      | 3.25        | 3.28      | 3.28        | 3.28      |
|                     | Phi Delta Theta     | 2.97        | 2.97      | 2.94        | 2.92      | 2.98        | 2.89      | 2.93        | 2.92      | 2.95        | 2.80      |
|                     | Phi Gamma Delta     | NA          | NA        | NA          | NA        | NA          | NA        | NA          | NA        | NA          | 3.30      |
|                     | Phi Kappa Psi       | 3.00        | 3.16      | 2.93        | 3.07      | 3.12        | 3.02      | 2.81        | 3.17      | 3.10        | 3.12      |
|                     | Sigma Alpha Epsilon | 3.04        | 3.13      | 3.04        | 2.97      | 3.03        | 2.99      | 2.88        | 2.66      | 2.87        | 3.07      |
|                     | Theta Chi           | 2.96        | 2.91      | 3.00        | 2.90      | 2.92        | 2.70      | 2.77        | 2.79      | 2.74        | 2.64      |

**\*Note\*** Chapter grade point averages are based on the rosters that are compiled throughout each semester. Changes in membership (transfers, inactivity, alumni status) that occur during the semester must be reported to Office of Student Involvement so that the College database can be updated to include current members in the scholarship report. Students who withdraw from school after the completion of the semester are still considered chapter members because they were registered at the college during that semester. Students studying abroad for the semester are NOT included in the scholarship report since they were not participating in fraternity/sorority activities. To avoid confusion, no changes are made to the rosters unless there is written documentation. **Students that have not signed a scholastic record release cannot have their individual grades released to their chapter.**