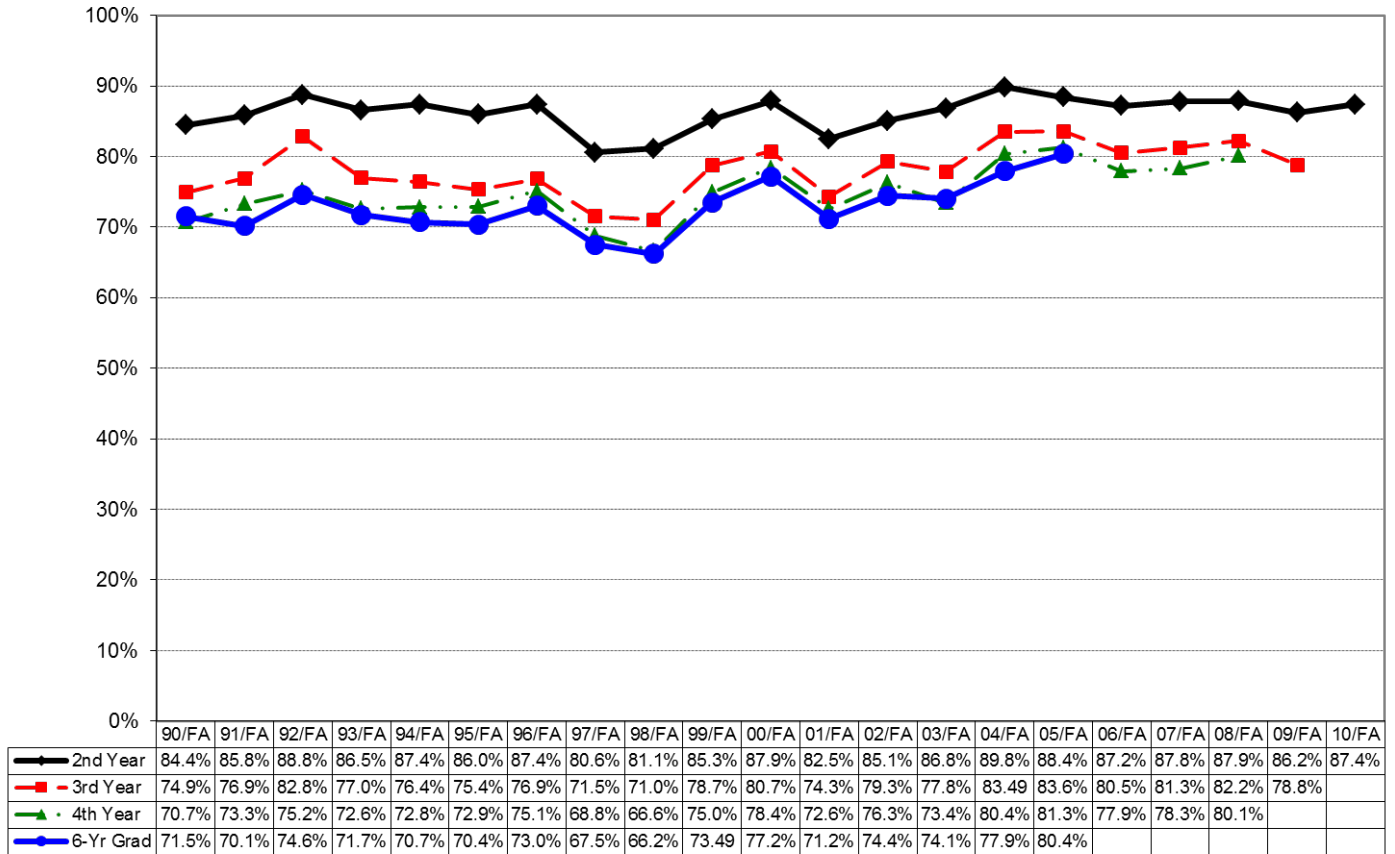


Allegheny’s most recent first-to-second-year retention percentage of first-time, full-time, degree-seeking freshman is 87%. The most recent six-year graduation rate is 80%.

The chart below depicts Allegheny’s historical retention and graduation percentages beginning with the cohort who entered in the fall 1990 semester. Included with the first-to-second year retention (in black) and the six-year graduation rate (in blue) are the first-to-third and first-to-fourth-year retention rates (in red and green respectively).

Since preparing students to enroll in another Title IV HEA-eligible institution is *not* part of Allegheny’s mission, transfer-out rates are not calculated.

Fall-entry, First-year Student Retention and Graduation Rates



Six-Year Graduation Rates

Fall 2005 First-time, Full-time, Degree-seeking Freshman Cohort

		<i># Enrolled</i>	<i># Graduated</i>	<i>% Graduated</i>
Gender	Men	250	199	79.6%
	Women	311	252	81.0%
	<i>All</i>	<i>561</i>	<i>451</i>	<i>80.4%</i>

Self-identified Racial/Ethnic Group	Students of Color (including international students)	46	26	56.5%
	White Students (non-Hispanic)	515	425	82.5%
	<i>All</i>	<i>561</i>	<i>451</i>	<i>80.4%</i>
	Asian/Pacific Isle	18	11	61.1%

Federal Financial Aid (first-year awards)	Pell Grant Recipients	91	66	72.5%
	Subsidized Stafford Loan Recipients who did not receive a Pell Grant	180	150	83.3%
	Students who did NOT receive a Pell Grant or a Subsidized Stafford Loan	290	235	81.0%
	<i>All</i>	<i>561</i>	<i>451</i>	<i>80.4%</i>